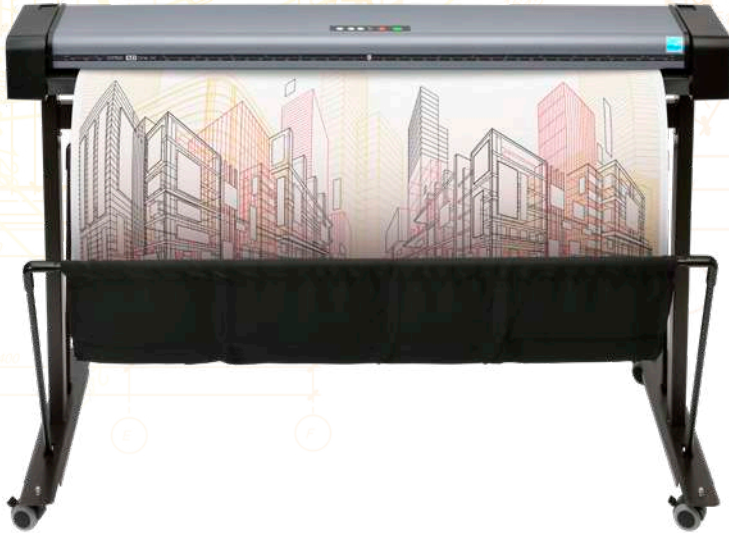


SD One X

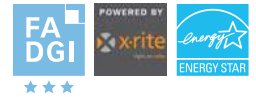
24" 36" 44"

**COMPACT
FLEXIBLE
FULL COLOR
SCAN UP TO E/A0**



ALL NEW!

COMPACT LARGE FORMAT SCANNER: FASTER, SMARTER, FULLY EQUIPPED



FADGI compliance. Together with Nextimage 7, SD One X exceeds FADGI 3-star compliance.

Exceptional value in a compact design

SD One X delivers speed, flexibility, and outstanding value in a lightweight 24", 36" or 44" format. User-friendly, with an integrated control panel for simple operation.

Efficient and cost-effective

An essential office scanner at a highly competitive price. Handle large-format maps, engineering, and construction drawings in-house to reduce costs, save time, and free up space.

Copy, share and collaborate

Designed for simplicity and precision, SD One X ensures reliable results, even on your most demanding projects.

Versatile document capture

Digitize architectural, engineering, and construction documents directly to your project folders in standard formats using Nextimage 7.

Powered by X-Rite®

The ICC color profile in Nextimage 7 is powered by X-Rite®.

Full color

SD One X supports full color scanning.

All popular file formats

Supports all popular scan file formats – like PDF, TIFF and JPEG.

Green

Energy Star® certified device.

Need to move the scanner about?

Don't worry, SD One X is light enough for one person to carry.

LIGHTWEIGHT AND AFFORDABLE

SEE MORE: contex.com/sdonex

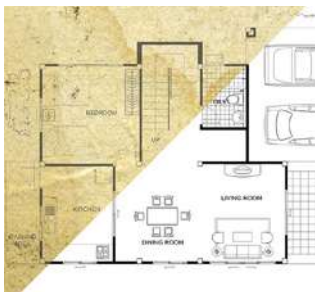
 **contex**®
WHEN IMAGING MATTERS

	SD ONE X 24	SD ONE X 36	SD ONE X 44
Optimized for	Convenience (occasional use)		
Maximum scan width	24 inches (610 mm)	36 inches (914 mm)	44 inches (1118 mm)
Maximum media width	26.6 inches (676 mm)	39.9 inches (1014 mm)	47.2 inches (1200 mm)
SCAN SPEED¹ (INCH/SEC) At maximum scan width of scanner			
200 dpi RGB color	4 ips		
200 dpi grayscale/monochrome	8 ips		
OTHER SPECIFICATIONS			
Optical resolution	600 dpi		
Maximum resolution	9600 dpi ² (interpolated)		
CIS technology	Contex CleanScan CIS with dual-sided LED lighting		
Total number of pixels	32400 pixels	54000 pixels	64800 pixels
Contex CFR ³	Yes		
Maximum media thickness	0.03 inch/0.75 mm		
Accuracy	0.1% +/-1 pixel		
Data capture	48-bit color, 16-bit grayscale		
Data output	Up to ² 48-bit color, 16-bit grayscale		
Color space	Adobe RGB, Device RGB, sRGB		
Connectivity	USB 3.0 with xDTR3		
Operating system	Windows 11 64-bit, Windows Server 2025 Standard Edition		
Included software ⁴	Nextimage 7 trial (incl. TWAIN driver, excl. licence)		
Optional software ⁴	Nextimage Scan & Archive, Nextimage Repro		
File formats	TIF, JPG, PDF, PDF/A, DWF, CALS, BMP, JPEG-2000(JP2), JPEG2000 Extended (JPX), TIF-G3, TIF-G4 and others		
Power consumption (Ready/Power save/Scanning)	5.5W / 0.5W / 14W (external power supply), ENERGY STAR [®] Certified		
Power supply	100 V / 230 V / 240 V, 60/50 Hz		
Weight and dimensions (LxWxH)	20.9 lbs. (9.5 kg) 32.4x9.1x4.9 inches (823x230x124 mm)	28.4 lbs. (12.9 kg) 45.7x9.1x4.9 inches (1162x230x124 mm)	32.2 lbs. (14.6 kg) 53.1x9.1x4.9 inches (1348x230x124 mm)
Optional scanner stands	Low stand, height: 31.2 inches (793 mm) High stand, height: 41.1 inches (1043 mm)		Low stand, height: 33.1 inches (841 mm) High stand, height: 48 inches (1220 mm)
CERTIFICATION AND WARRANTY			
Safety	IEC 62368-1. Certificates: cUL (USA and Canada), CE (Europe), CCC (China), EAC (Russia, Kazakhstan, Belarus)		
Electro Magnetic Compatibility (EMC)	Compliant with Class A requirements, including FCC rules (USA), ICES (Canada), EMC Directive (EU), CCC (China), VCCI (Japan), EAC (Russia, Kazakhstan, Belarus)		
Environmental	ENERGY STAR [®] Certified, WEEE (EU), RoHS (EU) and REACH (EU)		
Country of Origin	Designed and engineered in Denmark. Manufactured in China		
Warranty	2-year warranty and fast, easy parts replacement		
In the box	Scanner (24", 36" or 44" model), 2 m USB cable, external power supply, TWAIN driver and installation software, and user guides in PDF on USB, installation guide, calibration poster, calibration sheet and cleaning cloth		

1. Scanning speeds based on 24" wide document. Contex recommends Intel Core i5, AMD Ryzen 5 5500, or better 64-bit processors, 16 GB RAM and SSD SATA drive, min. USB 3.0 or Gigabit Ethernet.
2. Requires optional Nextimage 7 software
3. Color Fringe Removal (CFR) is an advanced Contex patented filtering technology designed to remove the fringes inherent in CIS strobing scanning devices
4. Contex applications create industry standard raster file formats which can be used in any CAD or GIS application

All trademarks remain the property of their respective holders, and are used only to directly describe the product being provided. Their use in no way indicates any relationship between Contex and the trademarks holders.

Scan, enhance, file and share with Contex SD One X large format scanner



Improve your originals
SD One X is a fully featured scanner. Pair it with Nextimage 7 for the complete scanning solution.



Flexible control panel
Scanner operation is easy with the intuitive SD One X control panel.

HP ready Océ ready EPSON ready Canon ready

Contex solutions are compatible with all leading large-format printers. See the full list at contex.com/nextimage-supported-printers



contex.com/sdonex

Contex HQ & EMEA
Global Scanning Denmark A/S
Copenhagen, Denmark
Phone: +45 4814 1122
info@contex.com

Contex Americas
Global Scanning Americas Inc.
Chantilly, VA, 20151, USA
Phone: +1 (877) 226 6839
salesamericas@contex.com

Contex Japan & Asia
Global Scanning Japan A/S
Yokohama, Japan
Phone: +81 45 548 8547
apac@contex.com

contex[®]
WHEN IMAGING MATTERS